

CEM Secretariat Team

JEAN-FRANCOIS GAGNE
Head of Secretariat



Leadership & Strategy

[Jean-Francois.Gagne](mailto:Jean-Francois.Gagne@cemsecretariat.org)

PRASOON AGARWAL
Deputy Head



Work Programme Strategy & Partnerships

[Prasoona.Agarwal](mailto:Prasoona.Agarwal@cemsecretariat.org)

RACHAEL BRIGGS
Special Advisor



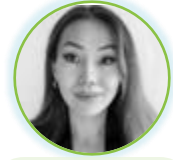
Governance & Finance

Workstreams:
Equality in Energy Transitions, Equalby30

Members:
Denmark, Netherlands, Sweden, Saudi Arabia, UK

[Rachael.Briggs](mailto:Rachael.Briggs@cemsecretariat.org)

MELISANDE LIU
Partnerships Manager



Workstream Coordination & Ministerial Meeting

Workstreams:
RGEI, Investment/Finance LTES, EPI, Transforming Solar (joint), SEAD

Members:
Brazil, Canada, Chile, China, European Commission, Germany, Mexico Portugal, Spain UAE

[Melisande.Liu](mailto:Melisande.Liu@cemsecretariat.org)

VINCENZO FRANZA
Partnerships Manager



Workstream Coordination

Workstreams:
21CPP, ISGAN, NICE Future, RISE3, Transforming Solar (joint) Solutions Centre

Members:
Finland, France, Italy, Japan, Korea, Poland

[Vincenzo.Franza](mailto:Vincenzo.Franza@cemsecretariat.org)

SARBOJIT PAL
Partnerships Manager



Workstream Coordination

Workstreams:
EVI, DriveToZero Marine Hubs, CCUS, IDDI, H2I

Members:
Australia, India, Indonesia, New Zealand, Norway, Russia, South Africa, United States

[Sarbojit.Pal](mailto:Sarbojit.Pal@cemsecretariat.org)

VACANT
Partnerships Manager



Workstream Coordination

JANE BARBIERE
Manager, Ops. & Comms.



Ministerial & Preparatory Meeting, Comms. strategy

[Jane.Barbieri](mailto:Jane.Barbieri@cemsecretariat.org)

AURÉLIE CRESTE
Office Administrator



Office Administration & Comms Support

[Aurilie.Creste](mailto:Aurilie.Creste@cemsecretariat.org)

MATILDE CIANI
Intern (Communications)



Comms and Website Support

[Matilde.Ciani](mailto:Matilde.Ciani@cemsecretariat.org)